

EPICVUE



Installation Manual

Our installation manual will walk you through the process step by step

www.epicvue.com/installation

Table of Contents

Contact EpicVue.....	3
Warnings.....	3
Before Installation.....	3
Tools Required.....	4
Receiving Your Order.....	5-6
Dome Rear Mount Installation.....	7-10
Connecting the Coaxial Cables.....	11-13
Connecting the DIRECTV DVR Receiver.....	14-15
Configuring and Activating the DIRECTV Receiver.....	16-20
Installing the Local Area Antenna.....	21
(Winegard Rayzar Amplified Antenna if purchased separately)	

You can also view corresponding step by step videos on our website at:
www.epicvue.com/installation

Contact EpicVue

Sales / Installation Support 1-866-335-9719

www.TVformytruck.com

Driver 24/7 Support: 1-866-900-4434

Warnings

Do not attempt to install the dome in the rain or in any wet conditions. Install in dry conditions only.

Care should be taken when transporting and setting up the dome. Do not toss or drop the dome.

Do not paint the dome cover. Painting the dome cover may cause signal degradation and will void your warranty.

If the unit is not installed properly, EpicVue's warranty may be voided.

Before Installation

When choosing a location to install the antenna mount, keep in mind that the satellite antenna requires a clear line of site of the southern sky. Obstructions such as trees, buildings, telephone poles, other vehicles, vehicle accessories or the vehicle itself may block the signal from the satellite. To avoid minimize issues with line of sight, it is recommended that the antenna be installed as high as possible without exceeding the 13'6" DOT restriction while still being able to attach the antenna securely to the vehicle. Install EpicVue dome on the driver's side of the rear of the sleeper to avoid tree limb damage.

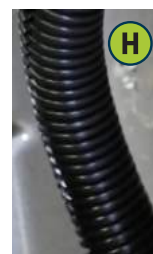
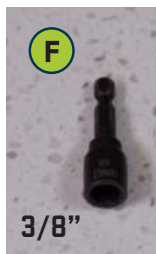
Refer to truck manufacturer guidelines and recommendations for installing accessories or brackets.

Dome should only be installed on the tractor as the support of the air ride suspension helps prevent vibration damage. Installation of the dome on the headache rack, frame or any other location will void the warranty.

If the unit is not installed properly, EpicVue's warranty may be voided.

1

TOOLS REQUIRED



- A** Drill – for drilling holes in the back of the sleeper
 - 1. 3/8" drill bit
 - 2. 1/4" drill bit
- B** Riv Nut Tool – used to secure riv nuts into holes drilled in back of sleeper.
*Can be purchased separately.
- C** Impact Gun
 - 1. 3/8" hex key used with Riv-Nut tool
 - 2. 7/16" socket for attaching rear mount to sleeper using 1/4"-20 bolts provided in rear mount box
- D** Wrenches for use with Riv Nut tool
 - 1. 1/2" end wrench
 - 2. 3/4" end wrench
- E** 1/2" socket
- F** 3/8" socket
- G** 1-1/8" hole saw or step bit used for drilling hole in sleeper to run coaxial into cab when there is no factory-installed cable entry point
- H** 1/2" Flex-tubing to protect coaxial cables at entry-point to sleeper
- I** Silicone Sealant
- J** Dielectric Grease

When the shipment arrives, please be sure all the items noted were received and there is no apparent damage. If anything appears to be damaged, please take pictures and notify EpicVue immediately.

Here are all the components contained in the various boxes.

EpicVue Dome Box

- EpicVue Dome
- AC Power Block (Inserter)
- Power Cord
- Coaxial Jumper
- 4 - Blue Loc-tite-1/4"-20 short
(Not Shown)
- 4 Lock washers
(Not Shown)



TV Box

- TV
- Power cord
- TV remote
- Driver Quick Tips



DIRECTV Receiver Box

DIRECTV Receiver
DIRECTV Access Card
Power cord



Rear Mount Box

Rear Mount
Sealed pack containing
8 Riv-nuts
8 bolts (1/4 - 20 long)
4 bolts with Lock Nuts (5/16 size)
7 Standard zip ties
2 Mini zip ties
Cable clamps



Overpacked Box

DIRECTV remote
29' Dual Coaxial cable
HDMI cord
Driver Support/Safety Sticker
Driver Quick Tips
(Not Shown)



3

Dome Rear Mount Installation

This mount is placed preferably on the driver's side back of the cab. The driver's side is preferable in order to minimize the dome being impacted by tree branches. If the truck is hauling reefers, then it is important to mount the bracket as close as possible to one side of the sleeper (again preferably the driver's side) and not in the middle of the truck. Be sure to keep the mount clear of any obstructions such as exhaust pipes or other brackets that will block the satellite signal.



1. Make sure the mount is level with the top of the bracket measuring 12'4" off the ground. This will keep the dome, when secured to the mount, high enough to receive signal but lower than the required DOT height restriction of 13'6". Begin by measuring 12'4" from the ground and making a mark on your sleeper.

2. Position the Fixed Mount Base so that the top of it is at the 12'4" mark. When the base is in the correct location, drill a 1/4" pilot hole in the top corner hole of the bracket. Put one of the 1/4"-20 bolt in the hole to hold it while you level the bracket and drill the second hole.



***Be aware during installation, the ground that your truck is sitting on may not be level so it's best to use the lines of the truck rather than an actual level to visually level the bracket.**



3. Next, start the other corner and drill a 1/4" pilot hole and then use another 1/4"-20 bolt in that hole to temporarily hold the bracket up so we can finish drilling the remainder of the holes. This technique eliminates the use of a paper template as well as another person to help-out. Use at least 6 of the holes on the 2 piece bracket to properly secure the bracket to the truck. Use all 8 holes on the 1 piece bracket to properly secure the bracket to the truck.

4. When all of the pilot holes are drilled, take out the 1/4"-20 bolts, set the fixed mount base aside. Using the 3/8" drill bit, drill out all previously drilled pilot holes.



5. Using an impact gun with between 1100 to 1300 inch-pounds and the 3/8 Hex bit with the Riv-nut tool, twist one of the Riv-nuts on the end of the Riv-nut tool mandrel.

Put some silicone sealant on each Riv-nut before inserting them into each hole, preventing any potential water damage.

***Do not use an impact gun with higher than 1300 inch-pounds as it will break the mandrel on the tool or pull the Riv-nuts through the fiberglass. See manufactures specs for your impact gun.**

6. Fasten all of the Riv-nuts using the 3/4" wrench and the Riv-nut tool with your impact gun. Make sure they are tight so the Riv-nuts won't spin around when installing the bolts.



7. After all the Riv-nuts are secure, replace the Fixed Mount Base. Beginning on one corner of the bracket, start to hand tighten the 1/4-20 bolts with a couple of threads, then go back over, using the impact gun with a 7/16" socket, securely locking down all bolts.



8. Now it's time to put the EpicVue satellite dome on the bracket. There are multiple sets of mounting holes on the Top Pivot Plate. Use the set of holes that allows you to get the dome as close to the truck as possible. Fairing extensions or other obstacles may necessitate using the outer set of holes.

On certain models of truck it maybe necessary to cut a crescent moon shape out of the wind fairing to make it fit on the bracket.

9. With the Dome sitting on the Top Plate so that the cables are coming out towards the passenger side of the truck, (typically where the entertainment center is located), position the dome so that the four holes in the Top Pivot Plate line up with the mounting holes in the bottom of the dome. Using the four smaller bolts (found in the dome box) with the blue lock-tite and a lock washer, fasten the dome to the Top Plate.



Key Points of the Dome Rear Mount Install

Make sure that you have all your items needed before beginning.

Regulations for DOT require the height of no more than 13'6", so install the top of the bracket at 12'4" will set the top of the dome just under the DOT height requirement.

Keep dome away from any obstructions such as pipes and other truck components.

Use the lines of the truck to level your bracket.

Make sure the riv-nuts are securely set with impact gun set at 1100 to 1300" pounds (no higher or else the riv-nuts will overtighten or break and risk falling out). Do not overtighten. If they are spinning, they are not tight enough and not secure

While installing these brackets, work slowly by starting with a few threads on the bolts before securely fastening.

Cables should be positioned toward the side where the entertainment center is.

Be careful not to strip the bolts that fasten the bottom of the dome and to only use the blue loc-tite 1/4"-20 short bolts. Use of the longer 1/4"-20 long bolts supplied with the rear mount will damage the domes and void the warranty.

*For more information on this, please view the installation video on Installing the Rear Mount found on our website

4

Connecting the Coaxial Cables

With the dome mounted securely to the back of the cab, you are ready to install the coaxial cable. It is important to note, that coaxial cables are easily damaged and inoperable if kinked or pinched in any way.

***Be very careful not to kink or put them in a place that will pinch these cables.**



1. Apply a small dab of dielectric grease to each coaxial connector on the 29' Dual Coaxial Cable, then connect the coax with the **white writing** on it to the **main** port on the dome. Connect the other coax line without writing to the secondary port of the dome.



Feed this coax across the sleeper and down through the wind-fairing brackets.

2. Now it's time to run the wires into the sleeper.

Find a spot where the wire can come up through the bottom of the sleeper cab. Some trucks already have a factory cutout, which can be used.

Pull up the padded liner and find the best place to drill the cable entry hole in the bottom of the sleeper.



Drill a 1-1/8" hole using a step bit or a hole saw.



Next run the cables through the hole, making sure they are pulled tight (without kinking the cable).



Add about 6" - 8" of flex tubing around the cables at the entry point to prevent them from rubbing and shorting out. Use a zip tie or two underneath the sleeper to prevent the coax from hanging down and catching on something.



3. Once you have run the cables into the cab, pick a route to run the cables to the entertainment center.

***Every setup is unique, as some cabs have cabinets with refrigerators and/or microwaves.**

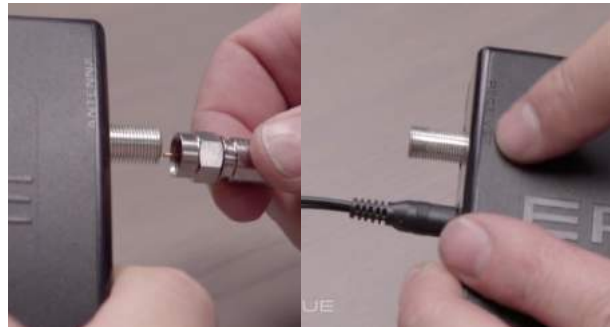


Choose a path that has little disruption and minimal alterations to the current configuration. Whatever you do, do not put the cables in a location where they could potentially get kinked or pinched. This will prevent satellite signal from reaching the receiver, and you will not get any picture.

4. Once you have routed the cables to the entertainment center, connect the coax with white writing on it to the port on the right hand side of the Epicvue AC power box labeled Antenna.

Take the small jumper coax provided in the kit and connect it to the port on the left of the AC power box labeled Receiver.

Now connect the other end of the small jumper coax to the outside port labeled Input 1 on the back of the DirecTV receiver.



Connect the other coax cable coming from the secondary port on the dome to the inside port labeled Input 2 on the back of the DIRECTV receiver. Finger-tighten these connections, then secure them with a 7/16" end wrench so the vibration from the truck won't loosen them.



Now install the power plug included with the AC power box into the power port on the left side of the power box and plug the other end of the cord into your power strip.

***For more information on this, please view the installation video on the AC Powered Dome found on our website.**



5

Connecting the DIRECTV DVR Receiver (Sold with Epic and Epic Premium Package)

The receiver with a DVR has two satellite inputs. Thus, the reason for the dual coaxial cable.



1. The receiver comes packaged in a box with the power cord and access card. You want to be careful not to discard this access card. Sometimes the access card is taped to the top of the receiver in a little green tinted package or is already installed in the card slot located on the front of the receiver.



The card goes right in the slot behind the access door on the front of the receiver unit. There's an arrow showing which direction to insert the card.

***The access card must always be seated for the system to work.**

2. There is a sticker that contains all the information regarding the receiver included with the receiver. EpicVue suggests that this sticker is placed on top of the receiver towards the front so the driver can reference them if needed.



How-to Videos: EpicVue.com/DriverOrientation
Troubleshooting Guide: EpicVue.com/DriverQuickTipsSM



24-7 Driver Support Line: **1-866-900-4434**
DO NOT CALL THE NUMBER ON YOUR TV SCREEN

DO NOT WATCH TV WHILE DRIVING

***Please Note:** Do not call the number on your TV screen. This is a general DIRECTV number. EpicVue has set-up a dedicated 24 hours a day, 7 days a week driver support number (1-866-900-4434). Please call this number anytime you need help with your EpicVue system.



3. Next, simply hook up the receiver to the TV. Run the HDMI cord from the TV HDMI slot into the HDMI slot on the DIRECTV receiver.

4. Plug both the DIRECTV and TV power cords into the power-strip along with the AC Power box. Plug the power-strip into the inverter (or APU) that is installed in the truck.



7

Configuring and Activating the DIRECTV Receiver

Now let's activate the satellite system. For proper activation, the dome cannot be indoors. Please make sure for this step, the dome has a clear line of sight of the Southern sky, where the satellite signal can reach you. The signal does not pass through buildings, trees, or any other obstructions.

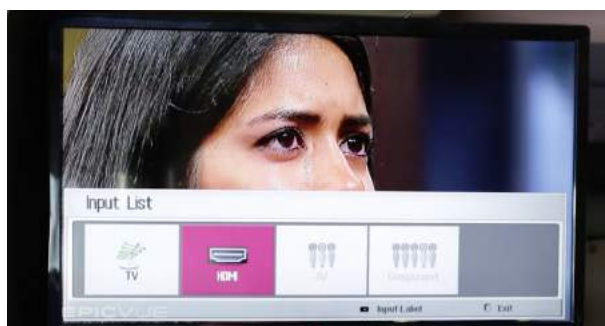
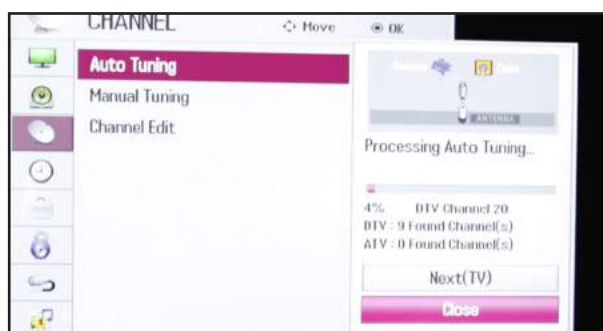


1. Now power on the power-strip and push the button on the front of the Epicvue AC Power Box. If the TV is brand new out of the box, follow the prompts and go through the standard set up. Refer to the TV manual or Driver Quick tips if you have any questions.

2. If you purchased the separate local area antenna, when the Auto Tune screen is displayed, press OK and proceed (otherwise you can skip this process). Allow time for it to scan for local channels that are in the area.



Once a few channels are found, end channel scan, and exit out of it.

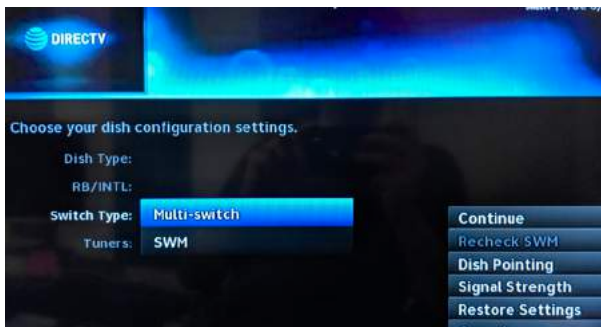


3. Press the Input button on the TV remote and select HDMI.

4. The screen for the DIRECTV receiver should now be displayed. The first screen will allow a language to be selected. Using the arrow keys on the remote control move to the language you prefer and press select.



5. This is the critical part of the receiver set up. On the dish type, select 01: Round Dish 18". Below that is the RB/Intl, Select "None".



Next in the menu is the Switch Type. Select Multi-switch.



Double check that the tuner type is set to Dual Tuner. Do this so the driver can watch one show, while recording another..

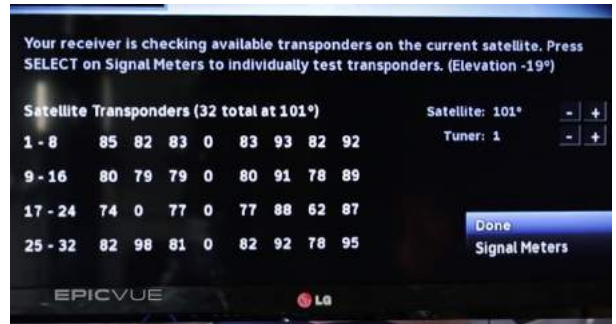
6. Now let's go over to the right side of the screen at the bottom and select Satellite Signal. This screen will show us our signal strength.



7. If a bunch of zeros show up on this screen, then check connections, and determine why there is no signal from the dish to the receiver. Make sure there are no obstructions between you and the southern sky.

If numbers are showing up under most of the transponders, then select Done, and it will go back to the previous screen. Just verify that 01: Round Dish 18", None, Multi-switch and Dual are still showing. Then select continue.

When it displays the Activation Screen, it's time to call in and have the receiver activated or hit.



8. At this point, please DO NOT call the number on your TV screen. Please call 1-866-900-4434. When you speak with a DIRECTV representative, ask them to “refresh the receiver”, provide them with the access card number located on the screen.



DIRECTV will then send a hit to the receiver. After the hit comes through, the screen will change and will go to a configuration page. Select Continue regardless of what is shown on this screen.

9. Displayed next is the Remote Setup Screen. Select Setup Remote Later. It will go through a “receiving channel guide” process and when finished please hit “Continue”.



10. Next displayed is Watch DIRECTV now popup menu. Select Watch DIRECTV. Verify any of the following channels, dependent upon the program purchased, channels like 206, which is ESPN Sports Center, 502, which is HBO, 545 Showtime, and 705, which NFL Sunday Ticket.

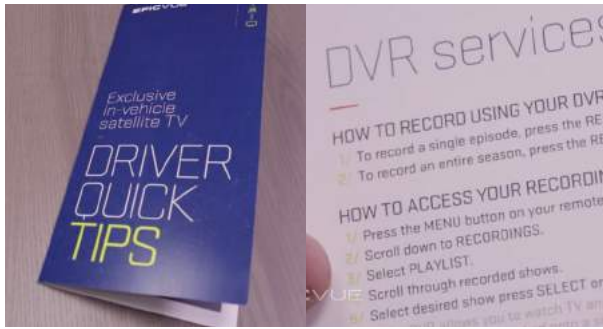
*If any screen is blank, or in the case of NFL Sunday Ticket, the DIRECTV logo is not showing, then please inform the DIRECTV agent. If they are not able to resolve this issue, please call EpicVue at 1-866-335-9719.

11. This is also a good time to verify that the DVR is functioning. Find an active channel, press the Record button on the remote, and record a few seconds.



Find the program you have recorded, and make sure it plays back. Once programming is verified, then the activation and setup process is complete.





12. Lastly, please be sure to reference the Driver Quick Tips Guide. This guide helps a driver know how to do several things: Power on and off the system, use the over-the-air antenna (if purchased separately), know how to use the DVR, as well as sync the remote, and other troubleshooting tips.



On the back is our dedicated customer support line, specifically for the drivers, that is staffed 24 hours a day, seven days a week. Verifying the Driver Quick Tip guide is in the cab will answer most of the questions a driver will have with their new system.

8

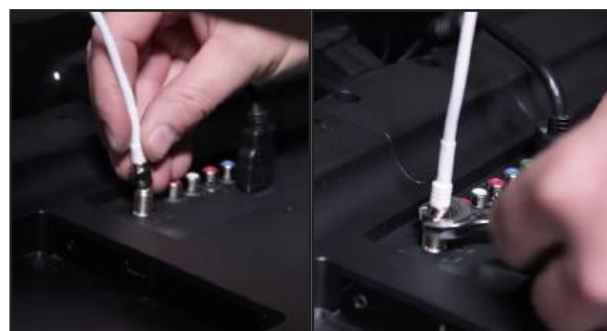
Installing the Local Area Antenna [Winegard Rayzar Amplified Antenna if Purchased Separately]

EpicVue has an optional off-air antenna available. It's a Winegard Rayzar amplified antenna, one of the best on the market. Install this antenna as it is by far a higher-quality antenna than what comes on the truck. The driver will use this antenna when they want to get their local channels.



1. This antenna is usually placed in the top window and secured between the window and the window shade. Then run the cables down to the cabinet and down to the rear of the Direct TV receiver.

2. Located on the back of the Direct TV receiver is a USB port, which powers the amplifier. Plug the separate USB cord included in the antenna box into the USB port on the receiver then connect the smaller end of the USB cable to the small white box located three feet up the cable of the Rayzar antenna. A green light should come on when the DirecTV receiver is powered on indicating that you have power to the amplifier for the antenna.



3. Connect the coax cable on the end of the antenna to the antenna in port on the back of the TV. And tighten that down, and then secure with a 7/16 end wrench.

***If you have done this correctly, you should be getting a signal from the off-air antenna to the TV. If you are not getting the signal from the antenna, feel free to review these steps or call EpicVue at 1-866-335-9719.**